

Trusted. Simple. Effective.



# Lenor Professional

## Fabric Enhancer – Spring Awakening

Professional fabric enhancer formulated to help extend linen life while providing long lasting freshness and softness.



### Use Lenor Professional

### ...for outstanding business results

#### Trusted

- From a renowned softener brand Lenor.
- A boosted formula for Professionals containing more active ingredients vs. Lenor retail formula.

#### Simple

- Ergonomic bottle with non-drip spout and a specially calibrated measuring cap that gives better dosing control.

#### Effective

- Contains specific softness technologies that protect the fibers from damage to help extend linen life.
- Provides extra softness and fluffiness vs. detergent alone.
- Designed to bring long lasting freshness to your Professional laundry.
- Effective even after tumble drying.
- Makes linen easier to iron.
- Helps reduce static cling on fabrics.

#### ★★★★★ Satisfy your guests

Comfort from soft, fluffy and nice smelling linen can help you improve your ratings & reviews and generate incremental business.



#### Minimize your total operating cost

Lenor PGP superior formula can help you minimize your linen replacement frequency helping you save money on your core business.



#### Contribute to a more sustainable development

Lenor powerful concentrated formula will help you conserve packaging and linen for longer.



#### Care for your staff

Lenor PGP provides great freshness with every wash to avoid rewashing and save time to your staff. It is also safe & easy to use for your staff which means less time & cost for training.

every experience counts.™

P&G  
Professional

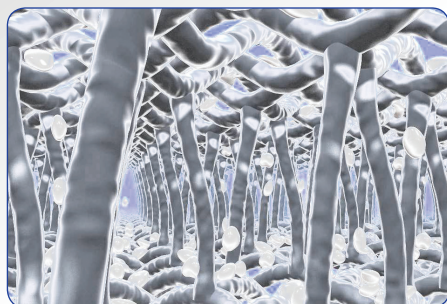
Trusted. Simple. Effective.

# Technical information

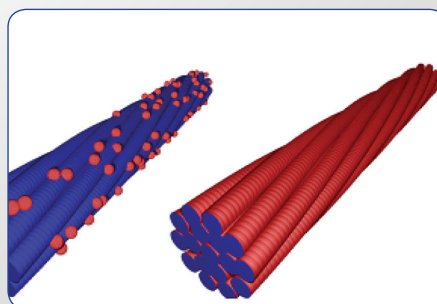


Research & Development Corner

## Lenor Professional contains innovative softening technologies which help extend linen life



Lenor contains softening micro drops which penetrate deep into the fibres during the wash.



The softening micro drops lubricate the fibre. This reduces friction and helps protect the fabric from wear and tear.



### Technical Description

- **EAN code:**
- **Appearance:** Blue colored liquid
- **Smell:** Pleasant perfume
- **pH (neat):** 2.90 – 3.50
- **Density:** 0.998 – 1.000g/ml
- **Water solubility:** High



### Safety Instructions

Please make sure your employees read and understood the product label and your COSHH assessment (Chemical Risk Assessment in EU) before using this product. The label contains directions for use and both label and SDS contain hazard warnings, precautionary statements, first aid procedures and storage information. SDS are available on-line at our website [www.pgpro-msds.com](http://www.pgpro-msds.com) or can be provided to you via the call center (+33-XXX-XXXX).



### Usage & Dosing Instructions

Use in last rinse.

Dose correct amount. Using more than recommended can increase fabric flammability.

#### Dosage



Dosage per kg of dry linen (1kg = 4 ml)



### Where to Use

- Safe to use on white and colored textiles.
- Can be used at wash temperatures from 20 till 95C. Always follow the instructions as mentioned on the fabric label.



### Where Not to Use

- Should not be used on children's sleepwear or garments labeled as flame resistant as it may reduce flame resistance.
- On garments made with fluffier fabrics (such as fleece, velour, chenille).

every experience counts.™

P&G Professional